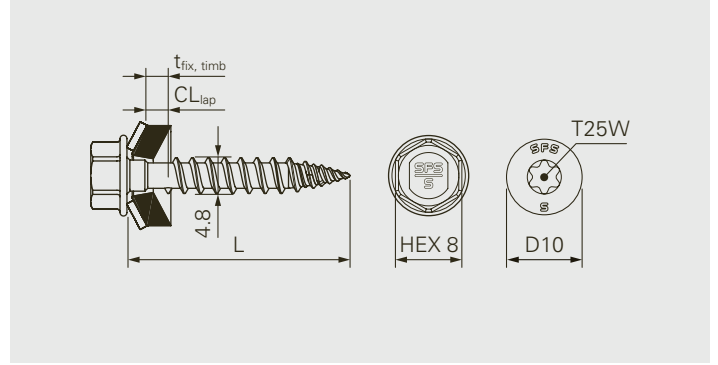
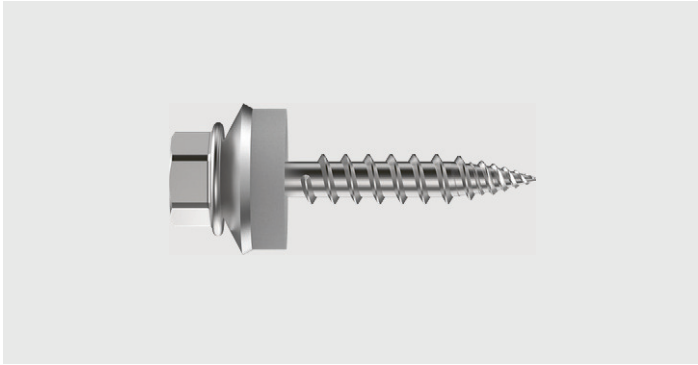


# CXLW-4.8-A2/A4



## Description

Self-drilling fastener made of stainless steel with FastTip®, free-spin zone and sealing washer

## Application

- Fastening of overlaps of profile sheets
- Fastening of overlaps of sandwich panels
- Fastening of flashings onto profile sheets
- Fastening of flashings onto sandwich panels
- Fastening of profile sheets onto timber

## Component 1 (t<sub>1</sub>)

|           |            |
|-----------|------------|
| Steel     | 0.4–1.0    |
| Steel     | 2×0.4–0.75 |
| Aluminium | 0.5–1.5    |

## Component 2 (t<sub>11</sub>)

|           |               |
|-----------|---------------|
| Steel     | 0.4–1.0       |
| Steel     | 2×0.4–0.75    |
| Aluminium | 0.5–1.5       |
| Timber    | $l_p \geq 23$ |

Condition: Total thickness within CL<sub>lap</sub>

## Fastener material

Austenitic stainless steel A2/A4, hardened tip  
Sealing washer: Aluminium, EPDM-seal

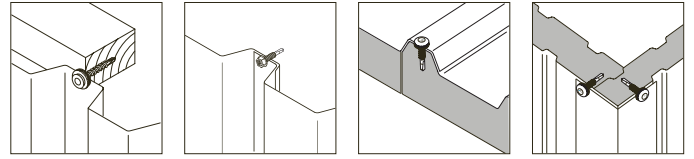
## Features and Benefits

- Fast and chip-free installation without necessary post-cleaning
- No torque control required thanks to the free-spin zone
- Comfortable installation without overwinding risk
- High security against unwinding by the cut-off thread-end
- Special AV-shaped sealing washer for high clamping range
- High quality EPDM-seal with long durability

## Approvals



All measures in mm



## Fastener in A2

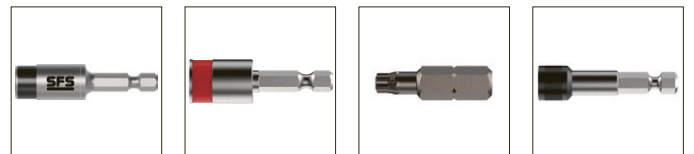
| Product code           | PU  | L  | CL <sub>lap</sub> | t <sub>fix, timb</sub> | A11     | AV14    | AV16    |
|------------------------|-----|----|-------------------|------------------------|---------|---------|---------|
| CXLW-AV14-4,8×28-A2    | 100 | 28 | 0.8–3.5           | 0–2                    | –       | 1747623 | 1749183 |
| CXLW-AV14-4,8×28-A2    | 500 |    |                   |                        | 1659057 | 1749230 |         |
| CXLW-D10-A11-4,8×28-A2 | 100 | 28 | 0.8–2.5           |                        | 1748193 | –       | –       |
| CXLW-D10-A11-4,8×28-A2 | 500 |    |                   |                        | 1747805 |         |         |

Please refer to the “Definition of clamping range and fixing thickness” in the technical introduction for definitions and diagrams related to CL<sub>lap</sub> and t<sub>fix, timb</sub>.

## Fastener in A4

| Product code           | PU  | L  | CL <sub>lap</sub> | t <sub>fix, timb</sub> | A11     | AV14    | AV16    |
|------------------------|-----|----|-------------------|------------------------|---------|---------|---------|
| CXLW-AV14-4,8×28-A4    | 100 | 28 | 0.8–3.5           | 0–2                    | –       | 1747812 | 1748204 |
| CXLW-AV14-4,8×28-A4    | 500 |    |                   |                        | 1747773 | 1748209 |         |
| CXLW-D10-A11-4,8×28-A4 | 100 | 28 | 0.8–2.5           |                        | 1748220 | –       | –       |
| CXLW-D10-A11-4,8×28-A4 | 500 |    |                   |                        | 1748223 |         |         |

Please refer to the “Definition of clamping range and fixing thickness” in the technical introduction for definitions and diagrams related to CL<sub>lap</sub> and t<sub>fix, timb</sub>.



## Accessories

| Product description | PU | Insert drive | Recess | L  |         |
|---------------------|----|--------------|--------|----|---------|
| SOK-IT-¼"-57-6Nm    | 1  | HEX¼"        | HEX8   | 57 | 1667323 |
| Socket E308-¼"-50   |    |              |        | 50 | 1646160 |
| Bit T25W-25-HEX¼"   |    |              | T25W   | 25 | 7662    |
| Bit holder ZA¼"-58  |    |              | HEX¼"  | 58 | 1162306 |

### All measures in mm

All information is non-binding and without guarantee. Before using the products, all specifications and calculations must be checked by a suitably qualified person and local regulations must be observed. This document is subject to revision. We reserve the right to make technical changes.