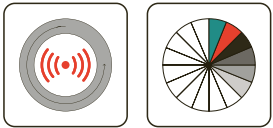
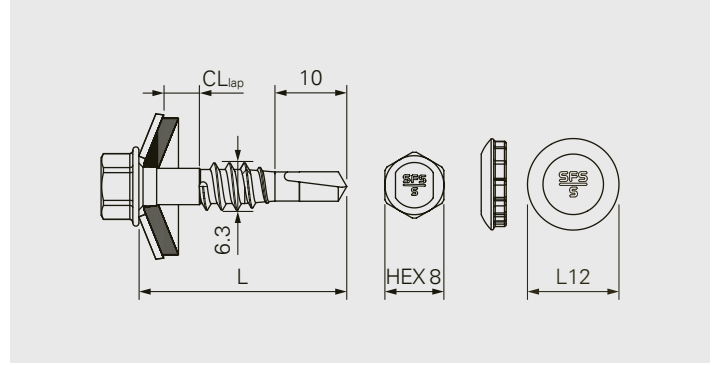
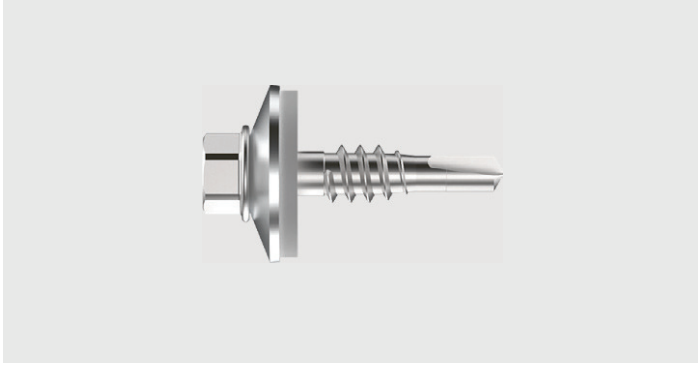


# SXL2-6.3-A2/A4



## Description

Self-drilling fastener made of stainless steel with free-spin zone and sealing washer

## Application

- Fastening of overlaps of profile sheets
- Fastening of overlaps of sandwich panels
- Fastening of flashings onto sandwich panels
- Fastening of flashings onto profile sheets

## Component 1 (t<sub>1</sub>)

Steel	0.4–1.5
Steel	2×0.4–0.88
Aluminium	0.5–1.5

## Component 2 (t<sub>11</sub>)

Steel	0.4–1.5
Steel	2×0.4–0.88
Aluminium	0.5–1.5

Condition: Total thickness within CL<sub>lap</sub>

## Fastener material

Austenitic stainless steel A2/A4, hardened tip  
Sealing washer: Aluminium, EPDM-seal

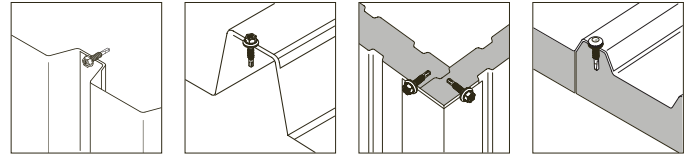
## Features and Benefits

- No torque control required thanks to the free-spin zone
- Comfortable installation without overwinding risk
- High security against unwinding by the cut-off thread-end
- Special AV-shaped sealing washer for high clamping range
- High quality EPDM-seal with long durability

## Approvals



All measures in mm



## Fastener in A2

Product code	PU	L	CL <sub>lap</sub>	AV14	AV16	AV19
SXL2-AV14-6,3×26-A2	100	26	0.8–3.5	1748183	1748186	–
SXL2-AV14-6,3×26-A2	500			1748188	1748189	
SXL2-AV19-6,3×28-A2	100	28	3.0–6.5	–	–	1747702
SXL2-AV19-6,3×28-A2	500					1747732

Please refer to the “Definition of clamping range and fixing thickness” in the technical introduction for definitions and diagrams related to CL<sub>lap</sub>.

## Fastener in A4

Product code	PU	L	CL <sub>lap</sub>	AV14	AV16	AV19
SXL2-AV14-6,3×26-A4	100	26	0.8–3.5	1748185	1748191	–
SXL2-AV14-6,3×26-A4	500			1748192	1748205	
SXL2-L12-AV14-6.3×26-A4	100	26	0.8–3.5	1749182	–	–
SXL2-L12-AV14-6.3×26-A4	500			1749170		
SXL2-AV19-6.3×28-A4	100	28	3.0–6.5	–	–	1747703
SXL2-AV19-6.3×28-A4	500					1747733

Please refer to the “Definition of clamping range and fixing thickness” in the technical introduction for definitions and diagrams related to CL<sub>lap</sub>.



## Accessories

Product description	PU	Insert drive	Recess	L	
SOK-IT-¼"-57-6Nm	1	HEX¼"	HEX8	57	1667323
Socket E308-¼"-50				50	1646160
Socket E420-¼"-74			74	973316	

### All measures in mm

All information is non-binding and without guarantee. Before using the products, all specifications and calculations must be checked by a suitably qualified person and local regulations must be observed. This document is subject to revision. We reserve the right to make technical changes.